

**BALDOR® • RELIANCE** 

**Product Information Packet**

**ECP4315T-4**

**40HP,890RPM,3PH,60HZ,365T,A36062M,TEFC,F**

Part Detail							
Revision:	L	Status:	PRD/A	Change #:		Proprietary:	No
Type:	AC	Elec. Spec:	A36WG1042	CD Diagram:	416820-036	Mfg Plant:	
Mech. Spec:		Layout:	611740-501-SH1	Poles:	08	Created Date:	12-13-2013
Base:		Eff. Date:	04-24-2020	Leads:	3#6		

Specs			
Catalog Number:	ECP4315T-4	Heater Indicator:	No Heater
Enclosure:	TEFC	Insulation Class:	F
Frame:	365T	Inverter Code:	Inverter Ready
Frame Material:	Iron	KVA Code:	G
Output @ Frequency:	40.000 HP @ 60 HZ	Lifting Lugs:	Standard Lifting Lugs
Synchronous Speed @ Frequency:	900 RPM @ 60 HZ	Motor Lead Quantity/Wire Size:	3 @ 6 AWG
Voltage @ Frequency:	460.0 V @ 60 HZ	Motor Type:	A36062M
XP Class and Group:	CLI GP A,B,C,D	Mounting Arrangement:	F1
XP Division:	Division II	Power Factor:	77
Agency Approvals:	CSA EEV	Product Family:	General Industrial
Auxillary Box:	No Auxillary Box	Pulley End Bearing Type:	Ball
Base Indicator:	Rigid	Pulley Face Code:	Standard
Bearing Grease Type:	Polyrex EM (-20F +300F)	Shaft Rotation:	Reversible
Constant Torque Speed Range:	6-60	Shaft Slinger Indicator:	Shaft Slinger
Current @ Voltage:	52.000 A @ 460.0 V	Speed Code:	Single Speed
Design Code:	B	Motor Standards:	NEMA
Drip Cover:	No Drip Cover	Starting Method:	Direct on line
Duty Rating:	CONT	Thermal Device - Bearing:	None

<b>Feedback Device:</b>	NO FEEDBACK	<b>Thermal Device - Winding:</b>	None
		<b>XP Temp Code:</b>	T3C

Nameplate NP2496L

MOBIL POLYREX EM

Nameplate NP3238									
CAT NO	ECP4315T-4	SPEC NO.	A36-5084-1042						
HP	40	AMPS	52	VOLTS	460	DESIGN	B		
FRAME	365T	RPM	890	HZ	60	AMB	40	SF	1.15
D.E. BRG.DATA	6313	O.D.E. BRG.DATA	6313	PH	3	DUTY	CONT	INSUL.CLASS	F
D.E. BRG.	65BC03J30X	TYPE	P	ENCL	TEFC	CODE	G	NEMA NOM EFFICIENCY	93
O.D.E. BRG.	65BC03J30X	POWER FACTOR	77	MAX CORR KVAR	15.0	GUARANTEED EFFICIENCY	91.7		
3/4 LOAD EFF.	93.4	TEMP	= 160						
TEMP CODE	T3C	CT HZ	6-60	VT HZ	0-60				
CHP HZ	60-90								
INVERTER-TEMP-CODE	T3A								
SER.NO.		MOTOR WEIGHT							

Parts List		
Part Number	Description	Quantity
SA273559	SA A36-5084-1042	1.000 EA
RA260152	RA A36-5084-1042	1.000 EA
421948051	LABEL, MYLAR	1.000 EA
NP2496L	MOTOR LUBE NAMEPLATE	1.000 EA
000613006PU	N/P (RELEASE QTY 10,000) UL CSA LABEL	1.000 EA
000692000VD	LABEL WARNING	1.000 EA
NP3238	SS CP XEX SEVERE DUTY MAIN NP	1.000 EA
085922073B	BRKT 360 085922072WCC KB	1.000 EA
415072001B	CLAMP	1.000 EA
078559034A	+F/C A 078559001A - 360	1.000 EA
034180012DA	KEY 1X4X1/4X1-1/2 L	1.000 EA
412118006A	DRAIN	1.000 EA
078557001F	FAN KB 110/50 (60) 360	1.000 EA
004824015A	GREASE POLYREX EM	0.540 LB
032018012DK	HHCS 1/2-13X1-1/2 PLTD.	4.000 EA
032018008AK	HHCS 1/4-20X1 PLATED	4.000 EA
032018024CK	HHCS 3/8-16X3 PLTD.	3.000 EA
415096002A	CPLG 1/8 HEX TYPE	1.000 EA
415045002E	SLGR	1.000 EA
410700004F	WSHR	1.000 EA
034530052AB	P/NIP 1/8X6-1/2 GALV.	1.000 EA
085922073B	BRKT 360 085922072WCC KB	1.000 EA
032018012DK	HHCS 1/2-13X1-1/2 PLTD.	4.000 EA
032018024CK	HHCS 3/8-16X3 PLTD.	3.000 EA

Parts List (continued)		
Part Number	Description	Quantity
415045002E	SLGR	1.000 EA
412118006A	DRAIN	1.000 EA
034530020AB	P/NIP 1/8X2-1/2 PLTED	1.000 EA
415096002A	CPLG 1/8 HEX TYPE	1.000 EA
076708000BB	CONDUIT BOX-360	1.000 EA
065776000C	GASKET,MAIN CBOX, 320-400	1.000 EA
076709000A	C/B Cover - 360	1.000 EA
067053000B	GASK 320-400	1.000 EA
418150003A	GREASE FITTING CAP	1.000 EA
032018010CK	HHCS 3/8-16X1-1/4 PLTD. 032018010CR	4.000 EA
035000001A	ALFTG 1/8" 1610-BL	1.000 EA
415000103H	T/LUG #2AWG-4/0AWG	1.000 EA
033512008LB	HHTTS 1/4-20X1 PLATED	4.000 EA
406099000A	PLUG - FAN COVER 320-440	1.000 EA
034000014AB	WSH ID.406 OD.812 TH.065	4.000 EA
035000001A	ALFTG 1/8" 1610-BL	1.000 EA
418150003A	GREASE FITTING CAP	1.000 EA
MG1025N19	WILKO 778.50 BLUE GREEN - 55 GAL DRUMS	0.250 GA
033775004EA	DRSCR #6-1/4 304 S.S.	4.000 EA
034180034HA	KEY 5/8X5/8X4-1/4 L	1.000 EA
HW1000A32	5/16 FL WASHER WIDE,ID=.344,OD=1.125	3.000 EA
032509020C	CARRIAGE BOLT - 360	3.000 EA
LB1449	DIV-2/NEC WARNING LABEL	1.000 EA
034530032BB	P/NIP 1/4X4" SCHED 40	1.000 EA

Product Information Packet: ECP4315T-4 - 40HP,890RPM,3PH,60HZ,365T,A36062M,TEFC,F

034631002AB	BUSH 1/4 TO 1/8 PLTD.	1.000 EA
035000001G	GREASE RELIEF FITTING, ALEMITE 317400	1.000 EA
034631002AB	BUSH 1/4 TO 1/8 PLTD.	1.000 EA
034530020BB	P/NIP 1/4X2-1/2 PLATED	1.000 EA
035000001G	GREASE RELIEF FITTING, ALEMITE 317400	1.000 EA
14PA1000	PACKAGING 314 GROUP COMBINED PRINT	1.000 EA
032018005DL	1/2-13 X 5/8 SILICON BRONZE HHCS	1.000 EA

REL. S.O.	FRAME	HP	TYPE	PHASE/ HERTZ	RPM	VOLTS
	365T	40	P	3/60	890	460
AMPS	DUTY	AMB °C/ INSUL.	S.F.	NEMA DESIGN	CODE LETTER	ENCL.
52	CONT	40/F	1.15	B	G	TEFC
E/S	ROTOR	TEST S.O.	TEST DATE	STATOR RES. @25 °C OHMS (BETWEEN LINES)		
492107	418141073EE	---	---	.194		

PERFORMANCE

LOAD	HP	AMPERES	RPM	POWER FACTOR %	EFFICIENCY %
NO LOAD	0	25.7	900	3.85	0
1/4	10.0	28.1	897	37.3	89.5
2/4	20.0	33.9	895	59.5	93.0
3/4	30.0	42.2	892	71.2	93.4
4/4	40.0	52.0	889	77.4	93.0
5/4	50.0	63.3	885	80.2	92.2

SPEED TORQUE

	RPM	TORQUE % FULL LOAD	TORQUE LB.-FT.	AMPERES
LOCKED ROTOR	0	140	330	282
PULL UP	225	123	290	265
BREAKDOWN	845	224	530	157
FULL LOAD	889	100	236	52.0

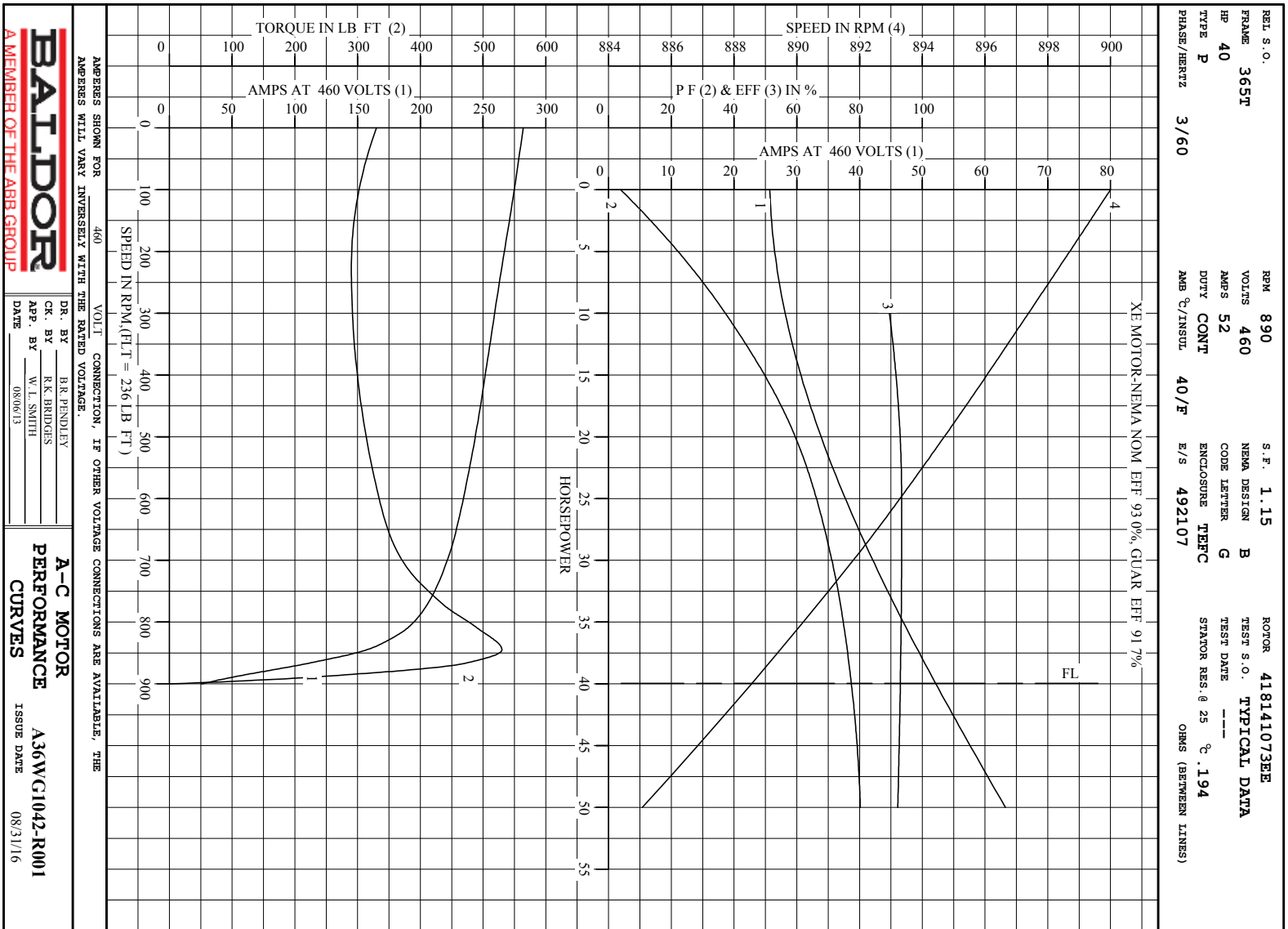
AMPERES SHOWN FOR 460. VOLT CONNECTION. IF OTHER VOLTAGE CONNECTIONS ARE AVAILABLE, THE AMPERES WILL VARY INVERSELY WITH THE RATED VOLTAGE

REMARKS: TYPICAL DATA  
 XE MOTOR-NEMA NOM. EFF. 93.0%, GUAR. EFF. 91.7%



DR. BY B.R. BENDLEY  
 CK. BY R.K. BRIDGES  
 APP. BY W.L. SMITH  
 DATE 08/06/13

A-C MOTOR PERFORMANCE DATA  
 A36WG1042-R001  
 ISSUE DATE 08/31/16

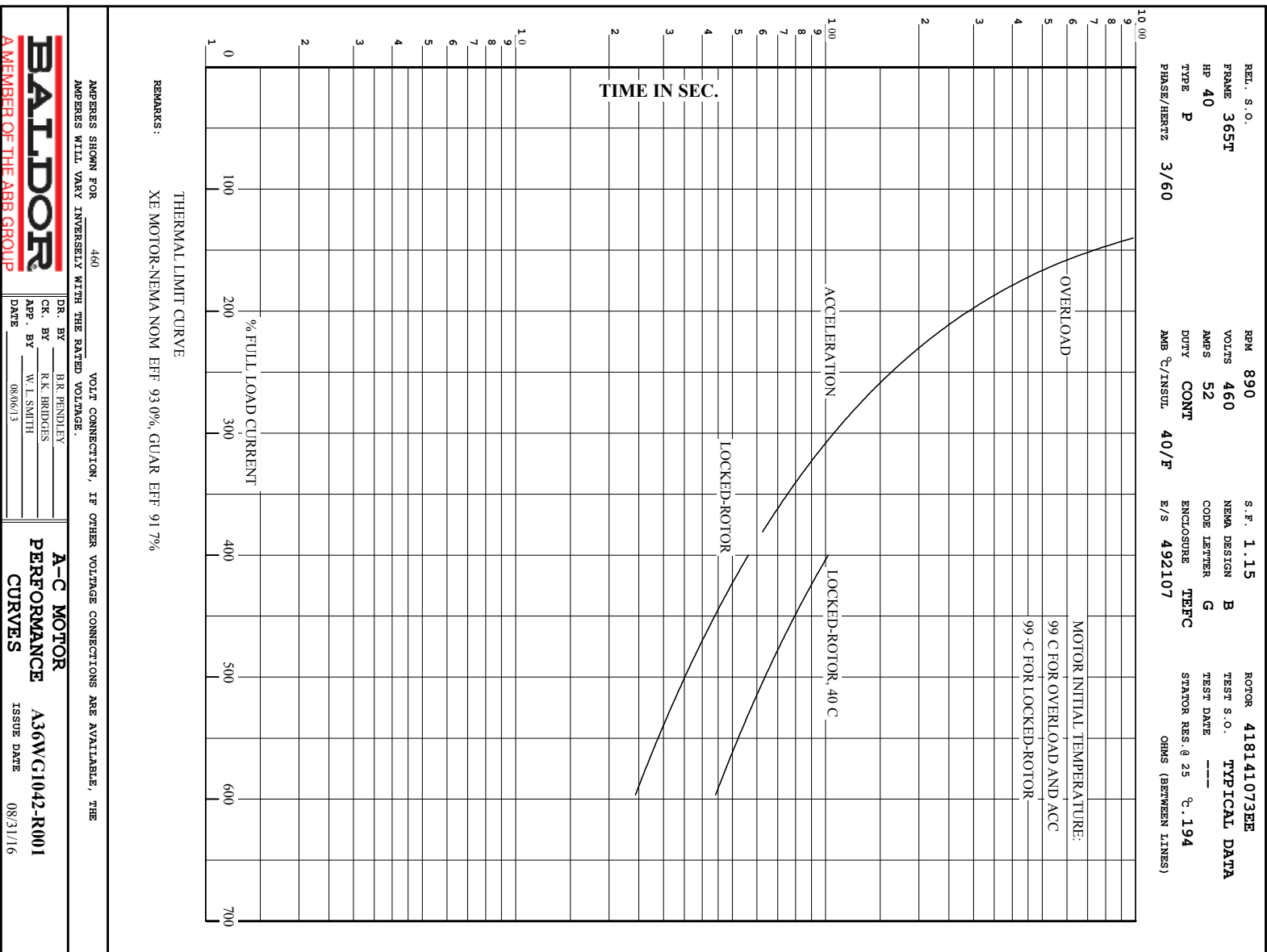


**BALDOR**  
A MEMBER OF THE ABB GROUP

DR. BY R.R. PENDLEY  
CK. BY R.K. BRIDGES  
APP. BY W.L. SMITH  
DATE 08/06/13

**A-C MOTOR**  
**PERFORMANCE**  
**CURVES**  
A36WC1042-R001  
ISSUE DATE 08/31/16

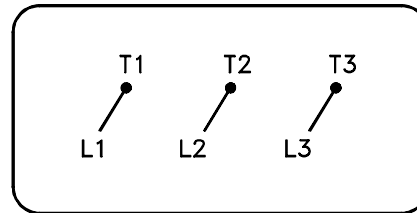
Printed on 8/31/16 8:35 @ bengap01.baldor.com





416820-036

A-C MOTOR  
 CONNECTION DIAGRAM  
 STANDARD 3 LEAD CONNECTED



(N.P. 1575-BA)

416820-036

REV. DESC: LOADED TO BUS, C/R 335225		
REV. LTR: -	VERSION: 00	TDR: 000000538207
FILE: \MGA\00000\682	REVISED: 11:54:06 04/30/2010	
MTL: -	BY: RAGRA	

**BALDOR**

CONN DIAG - STANDARD 3 LEAD  
 SH 1 of 1

Marketing maintained PDF of MN408:

[MN408?ManNumber=MN408](#)

Marketing maintained PDF of MN416:

[MN416?ManNumber=MN416](#)